

Shower arm f/ ceiling 200 mm

Qtoo collection

Product

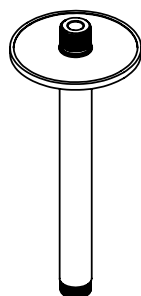
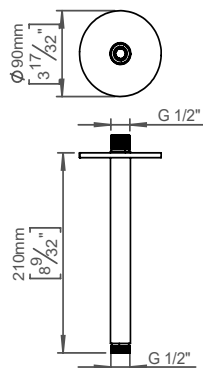
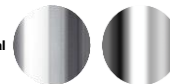
200mm, Ø90mm, satin finish.

Tender text

QTOO collection, shower arm for ceiling, length 7 7/8"-200mm. Manufactured in the highest quality marine grade, AISI 316 stainless steel, protecting against high levels of corrosion. 20 year warranty.

Product specification

Arm projection: 200mm - 7 7/8"
 1/2" connection
 Rose diameter: Ø90mm - 3 1/2"
 Material: Marine grade AISI 316 stainless steel
 Lead free compliant
[20-year warranty \(5 years for coated items\)](#)


Available finishes
Solid metal


Satin steel

Polished steel

PVD


Charcoal

Copper

Brass

Powder coated


Black

Spare parts/ accessories
Mounting
<https://dline.com/mounting-instructions/>
Product care

d line products are produced in the highest quality marine grade AISI 316 stainless steel. To sustain the unique d line finish please follow the below instructions:

- Wash down the surfaces using soapy water or mild detergent
 - Always thoroughly rinse off with clean water
 - To complete the cleaning procedure dry/polish the surface with a soft dry cloth
- Please do not use scouring powder, steel wool, chloride based detergents or other aggressive cleaning products as these may damage the surface.
- If spots or corrosion appear on the surface it is not due to the stainless steel quality, but to impurities in the environment, aggressive conditions or improper or insufficient cleaning.