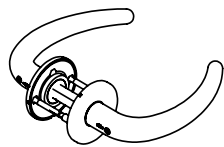
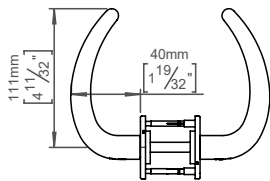
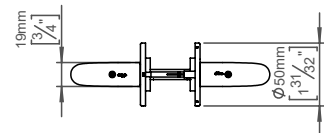


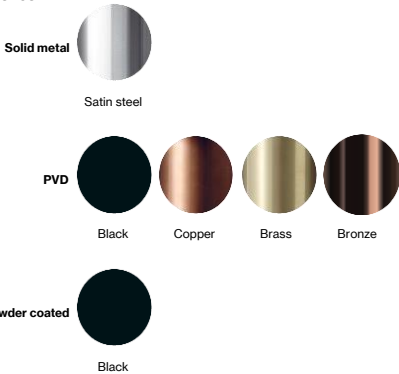
Coup lever handle

Knud Holscher collection

Product	Pair, 8x8mm, snap-on cover, cc 30/38mm, 33-59mm.
Tender text	Knud Holscher collection, lever handle Coupe pair, 8x8mm, snap-on cover, cc 30/38mm, 33-59mm. Manufactured in the highest quality marine grade, AISI 316 stainless steel, protecting against high levels of corrosion. Unique ball bearing system to secure extraordinary long lifespan. Certified in accordance with EN 1906 to 47-B1140U. 20-year warranty
Product specification	Dimensions: 136x50x59mm Material: stainless steel AISI 316 Surface finish: satin grain 320, crafted by hand 20-year warranty (5 years for coated items)



Available finishes



Spare parts/ accessories	14970102019 - Grub screw M5x8,3mm 14296174107 - Sectioned bolt set M4x110mm with bush 14281092092 - Spindle for door 33-59mm 14976700105 - TX10 tool kit 14293002002 - Snap-on cover tool
--------------------------	---

Mounting	https://dline.com/mounting-instructions/
----------	---

Product care

d line products are produced in the highest quality marine grade AISI 316 stainless steel. To sustain the unique d line finish please follow the below instructions:

- Wash down the surfaces using soapy water or mild detergent
- Always thoroughly rinse off with clean water
- To complete the cleaning procedure dry/polish the surface with a soft dry cloth

Please do not use scouring powder, steel wool, chloride based detergents or other aggressive cleaning products as these may damage the surface.

If spots or corrosion appear on the surface it is not due to the stainless steel quality, but to impurities in the environment, aggressive conditions or improper or insufficient cleaning.